



**ALASKA DIVISION OF HOMELAND  
SECURITY & EMERGENCY MANAGEMENT**

**Daily Situation Report**  
**25-239 August 27, 2025**



Toll-Free 1.800.478.2337

Anchorage Area 907.428.7000

SEOC 907.428.7100

<b><u>SEOC Preparedness Level</u></b>  Level 1 – Routine Operations	<a href="http://ready.alaska.gov">http://ready.alaska.gov</a>	<b><u>Alaska Military Installation Force Protection Level:</u></b>  FPCON Bravo
<b><u>NTAS Bulletin</u></b>  The U.S. Department of Homeland Security issued updated National Terrorism Advisory Bulletin on June 22, 2025. <a href="https://www.dhs.gov/national-terrorism-advisory-system">https://www.dhs.gov/national-terrorism-advisory-system</a>	<b><u>Maritime Security (MARSEC)</u></b>  Level - 1  Minimum Appropriate Security Measures	<b><u>Wildfires Preparedness Level</u></b>  Alaska Interagency Coordination Center - Level 1

(Significant changes from previous situation reports are red.)

**Significant Issues:**

Multiple weather systems are impacting the state presently with cold winter conditions in the north, flooding along the Dalton Highway, heavy rain in south central, and heat advisory in the south east. Please see the Significant Weather section below for additional details.

**Department of Health (DOH):**

For resources and current information, see: <https://health.alaska.gov/en/>

**Travel Alerts and Conditions:**

Dalton Highway is open but reduced to one lane at MP 142 and MP 230 for washouts. Travel with caution.

For current driving conditions, dial 511 or visit: <https://511.alaska.gov/>

**Barry Arm Landslide / Tsunami Risk:**

For the latest information on the Barry Arm Landslide and Tsunami risk, click here: <https://dggs.alaska.gov/hazards/barry-arm-landslide.html>

**Earthquakes:**

United States Geological Service (USGS) Earthquake Information:

<https://www.usgs.gov/programs/earthquake-hazards>

National Tsunami Warning Center: <https://tsunami.gov/>

**Alaska Volcanoes:**

Great Sitkin Alert Level: **Watch** and Aviation Color Code: **Orange**

Shishaldin Alert Level: **Advisory** and Aviation Color Code: **Yellow**

For Alaska Volcano updates, go to: <https://www.avo.alaska.edu/>

## **Air Quality Index (AQI) Advisories: No active advisory/episodes**

For the most up-to-date Air Quality Index Advisories:

<https://dec.alaska.gov/Applications/Air/airtoolsweb/Advisories>

## **Spills of Oil and Hazardous Substances: No active spill responses**

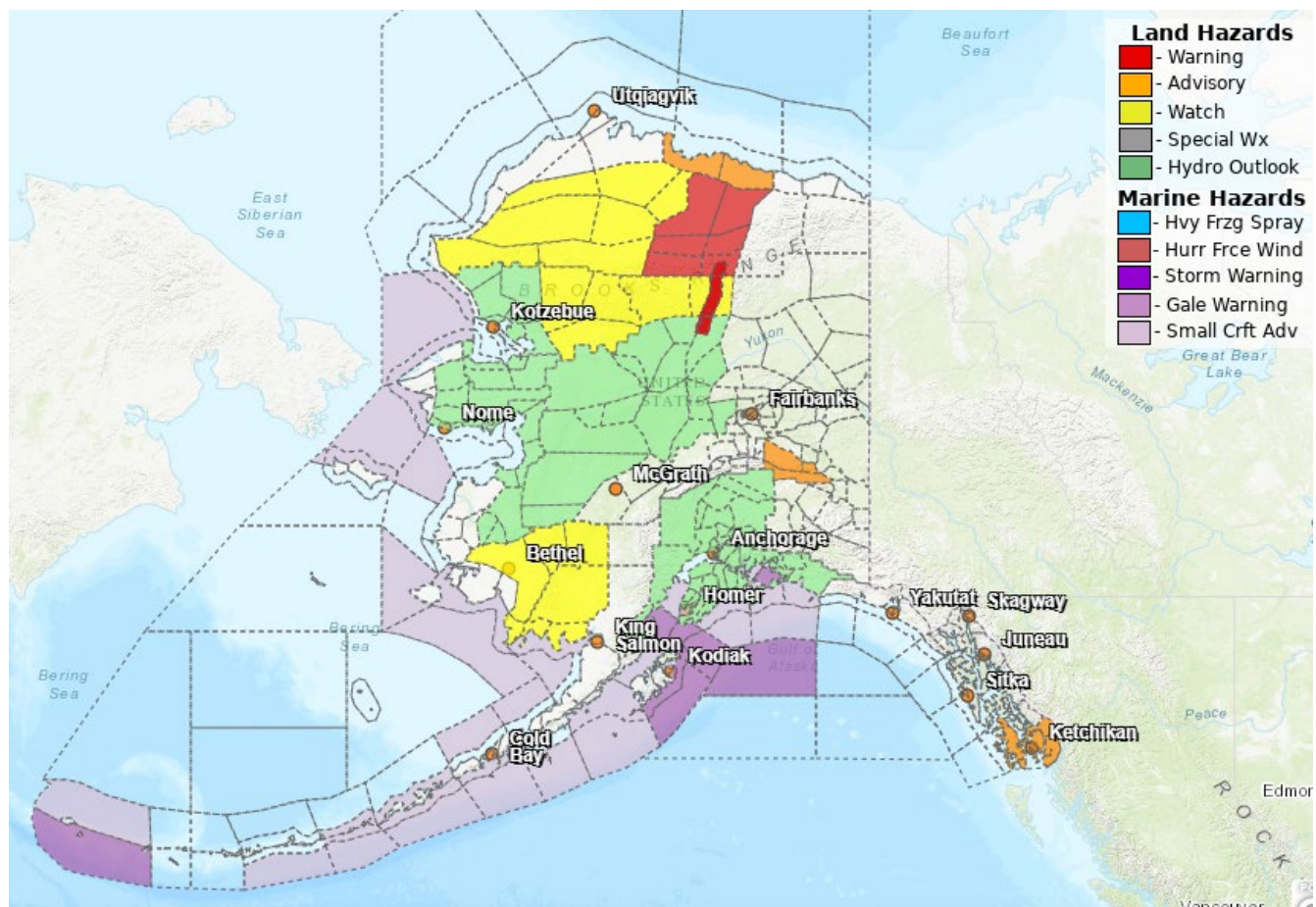
The Alaska Division of Environmental Conservation (ADEC) Spill Prevention and Response page is located at: <https://dec.alaska.gov/spar/ppr/spill-information/response/>

## **Alaska Cyber Security Information: No current published alerts notices**

State Employees may sign up for cybersecurity notifications and alerts at:

<https://oit.alaska.gov/security>

## **Significant Weather:**



Winter Weather Advisory - **Central Beaufort Sea Coast:** Ice accumulations possible, in effect until 10 PM Thursday

Winter Storm Warning - **Central Arctic Plains; Central Brooks Range:** Wintry precip expected with possible glaze ice, in effect until 1 AM Thursday.

Winter Storm Watch - **Western Arctic Plains; Howard Pass and the Delong Mountains:** Ice accumulations possible, in effect from late Wednesday night through Thursday evening.

Flood Warning - **Central Brooks Range; South Slopes of the Central Brooks Range; Upper Koyukuk Valley; Dalton Highway Summits:** Flooding caused by excessive rainfall continues, in effect until 1100 PM Wednesday

**Flood Watch - South Slopes of the Central Brooks Range; South Slopes of the Western Brooks Range; Upper Kobuk Valleys:** Flooding caused by excessive rainfall, remains in effect through Thursday afternoon.

**Wind Advisory - Eastern Alaska Range North of Trims Camp; Eastern Alaska Range South of Trims Camp:** South winds 30-40 mph with gust up to 60 mph, until 4 PM this afternoon

**Flood Watch and Hydrologic Outlook - Kuskokwim Valley West; Kuskokwim Valley East; Interior Kuskokwim Delta; Western Capes; Northern Bristol Bay Coast; Inland Bristol Bay:** Flooding caused by excessive rainfall continues to be possible, in effect through Thursday morning.

**Hydrologic Outlook - Anchorage; Anchorage Hillside / Eagle River; East Turnagain Arm; Portage; Lower Matanuska Valley; Hatcher Pass; Sutton / Upper Matanuska Valley; Eureka / Tahnetta Pass; Southern Kachemak Bay; SW Kenai Peninsula; NW Kenai Peninsula; Skilak Lake; Southern Kenai Mtns; Interior Kenai Peninsula; Turnagain Pass; West Prince William Sound & Whittier; Tyonek; Valdez; Thompson Pass; Cordova; Western Susitna Valley; Southern Susitna Valley; Central Susitna Valley; Northern Susitna Valley:** Significant rainfall Wednesday through Friday will bring river rises and localized flood potential across southcentral Alaska

**Heat Advisory - Prince of Wales Island; Ketchikan Gateway Borough; City of Hyder; Annette Island:** Temperatures up to 80 expected, in effect from noon to 7 PM Thursday

**For more information,** go to <https://weather.gov/arh>

#### **Alaska Wildland 2025 Fire Season:**

The Alaska Interagency Coordination Center is at Preparedness Level 1

Total Fires Year to Date: 438

Total Acres: 1,004,867 There are currently 141 active fire(s) with 2 new and 2 fires staffed.

For more information, go to <https://fire.ak.blm.gov/> or <https://akfireinfo.com/>

**The Next Situation Report** will be on August 28, 2025. A significant change in situation or threat level will prompt an interim report. This report is posted on the internet at <https://ready.alaska.gov/sitrep>.

To register for email distribution, PLEASE go to:

<http://list.state.ak.us/mailman/listinfo/dhsem.situation.report>.

Direct questions regarding this report to the SEOC at 907-428-7100 or [seoc@alaska.gov](mailto:seoc@alaska.gov).